

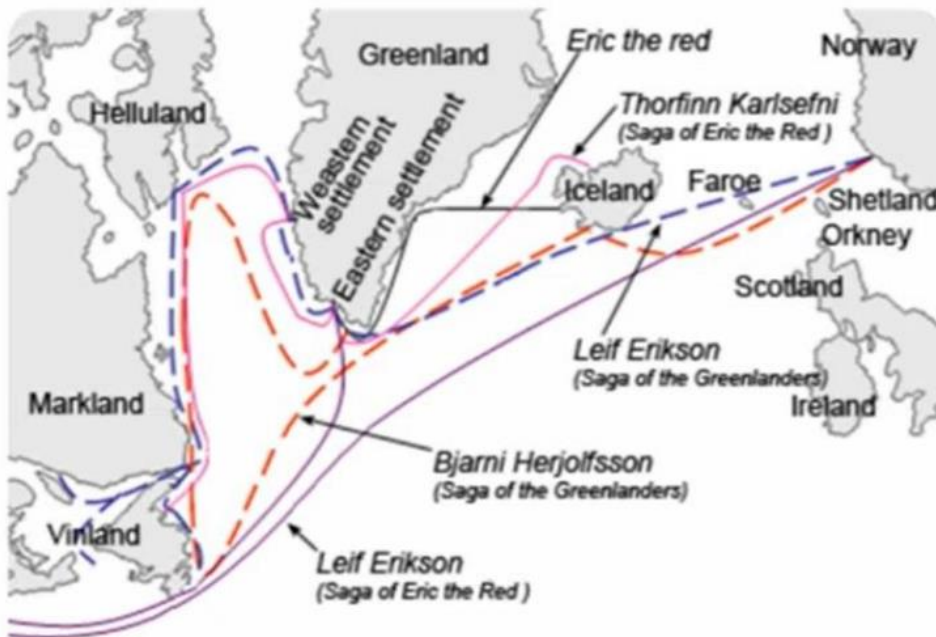


Itinerary

Greenland – Kulusuk Sailing Expedition

Live on board a traditional sailing ship for 7 amazing days in the natural wonders of East Greenland. Encounter the arctic landscape and wildlife in one of the most remote places in the world

A bit about the history



Day 1: Arrival in Greenland

Fly into one of the smallest international airports in the world with only a gravel landing strip — Kulusuk International Airport. Kulusuk is a traditional Greenlandic village that still reflects much of its original Inuit culture. You may want to use your time before embarking to hike the 300-meter tall Isikajia hill and enjoy an excellent view of the Denmark Strait, the icebergs, the fjord system, Tasiilaq island and the coastline.



Once you meet your crew and fellow travellers, get settled in and review the boat facilities. Afterwards, you'll have a safety briefing with your skipper and your guide. Finally set sail towards the initial anchorage and enjoy your first dinner onboard.



Days 2-9: Cruise through the Sermilik and Ammassalik Fjord System

This adventure takes you through the region of the Sermilik Fjord and the Ammassalik Fjord, on the eastern coast of Greenland. Departing from Kulusuk, you'll spend your time exploring a region far away from any infrastructure or inhabited area. The Sermilik Fjord, whose name 'Sermilik' means 'place with glaciers' is located at the southern end of King Christian IX Land, west of the Ammassalik fjord. It is one of the largest fjords in the south-eastern coast of Greenland and stretches inland in a roughly northern direction, splitting into two branches at its head. It culminates in multiple glaciers including the Helheim, Fenris and Midgard glaciers, which feed a constant flow of icebergs into the fjord. The far, western flank of the fjord is inundated by Greenland's icecap, second only in size to Antarctica. Surrounded by a steep mountainous shoreline and filled with sculpted icebergs, it makes for a spectacular setting. Your guide knows everything about the area—ask them about weather patterns, tradition, or the culture, they'll answer every question you might have. With icebergs towering over you and high walls and cliffs falling straight into the sea, keep an eye out for the wildlife. Narwhals, polar bears, arctic foxes, geese, seabirds, seals, beluga whales, walrus—these are just a few of the animals living in the Arctic Circle.

Day 10: Departure

You'll arrive at Kulusuk in the morning. Say goodbye to your crew, to your fellow adventurers, and to the boat that's been your home for 10 days. Return to the airport—bon voyage back home!



Included

- *International flight Reykjavík – Constable Point – Reykjavík.*
- *Accommodation on board in made up bunks/beds with shared facilities.*
- *All meals on board the sailing ship.*
- *Services of the crew, hiking excursions (as per itinerary) and arrangements*

Not included

- *Airfare to and from Iceland.*
- *Visas or Individual travel insurance.*
- *Excess baggage charges.*
- *Laundry charges and items of personal nature.*
- *Alcoholic beverages (available for extra charge & to be paid upon departure with cash money).*
- *Optional pre or post tours in Iceland*

Flight information

Reykjavík – Constable Point – Reykjavík, departure from Reykjavík Domestic Airport.

Estimated flying time: 1 hour 40 min.

Guide

- *Expert in sailing & wildlife of Greenland.*

Duration

- *8 days (thus 8 days & 7 nights on board).*



Departures 2024

The tour starts and ends on Tuesdays.

*Departures on sailing ship **"Alma"** (maximum 10 pax):*

Price: 6.800 EUR per person

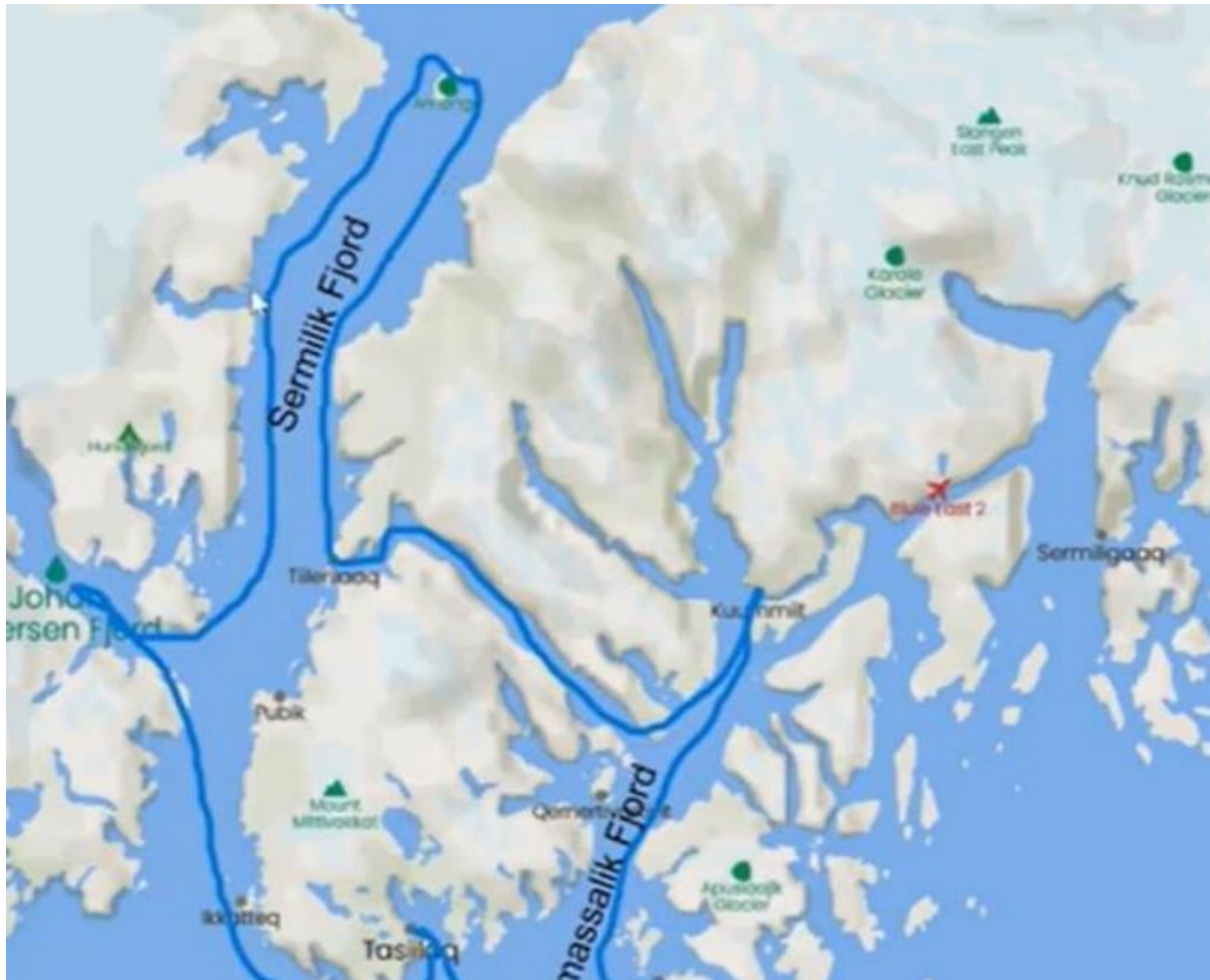
Bookings and requests

For booking requests, charter price and further details please contact:

Haakon@amundsenadventure.com



Greenland Expedition Route Map



Get To Know Your Sailing Boat

"Alma af Frøya" is a classical Norwegian "Hardangerjakt". She is a solid and sturdy vessel, that is built for handling arctic conditions and is fully equipped with SOLAS safety equipment. She is also insulated and hence very dry inside without any problems with condensation. The home port of Alma is at the island of Frøya in the middle of Norway, and she is owned by Fram Adventure AS.



Alma is 52 feet long, weighs 45 tons, and is very strong and sturdy. This is a boat for the outdoors, with ample deck space that offers plenty of room to enjoy the mountain views, the midnight sun, or the northern lights. Perfect for Ski & Sail in Lofoten, expeditions to Greenland, Jan Mayen and Iceland or just sliding quietly along the Norwegian coast hunting for the best fish, food, hiking or simply adventure.



See: www.amundsenadventure.com for further pictures



Photos from the Greenland Expedition Tours



This expedition, like our other longer trips, is first and foremost a great voyage of discovery, but also an excellent opportunity to learn about sailing and navigation. Using the boat as a starting point for discoveries and experiences ensures a truly unique experience. Are you ready for the summer's big expedition to Greenland

The Arctic is a vulnerable area which is under pressures from humans and the changing climate. At Amundsen Adventure, we are concerned with taking care of the environment as much as possible, and we believe that small boats with few people and little pollution and waste are much less harmful to the environment, climate, and local wildlife than larger boats and cruise ships. We also try to clean up rubbish and waste in the places we visit, instead of leaving anything behind. In Svalbard and Greenland, we follow AECO's



guidelines for encounters with wildlife, beach cleaning, and cultural heritage sites. You can read more about AECO's guidelines [here](#).

On our expeditions we have a slogan that you will eat better at sea than at home. Through our network and experience we will focus on local food with high quality e.g. Seathrout directly from the fishermen in East Greenland like her:



And our Whisky enjoyed when the anchor is secured is served with iceberg ice directly from the sea:



Polar bear protection is critical in Greenland and Svalbard and all our skippers can also function as guide and is certified to carry a gun, like here in East Greenland:



When operating in Arctic water safety is of outmost importance. We are fully equipped according to IMAS regulations. When going to shore in a dingy we are safely protected with survival suites:





Phone list and contacts:

Intern VHF: Kanal 69, bruk båtens navn ved oppkall

VHF Bodø Radio: Kanal 16

Hovedredningsentralen Bodø: 75559000

Alma call sign: LHTC, MMSI 259001190

Alma Satellite Phone: +88 1631548627

Boat/skipper/crew, phone nr:

FRAM Head Office: +47 46 88 3317